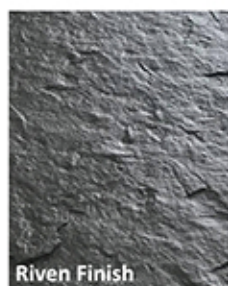


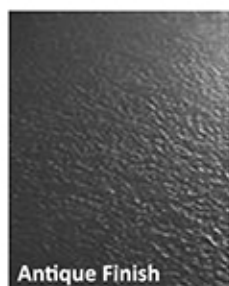


From headstones to plaques and benches, we can create your perfect **Caithness flagstone memorial**.

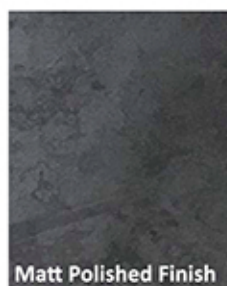
Using our naturally strong and durable stone with our in-house design team to help create a design as unique as the person it is created for and our installation team to carefully fit the memorial in place, Norse Stone can provide the the best combination of services to suit customers' needs.



Riven Finish



Antique Finish



Matt Polished Finish

Features & Benefits

Low Carbon Footprint - From extracting the stone to hand finishing the end product, all processes are handled on site.

High Performance - Renowned worldwide for its natural durability properties.

Wide Range of Uses - High flexural and compressive strength.

Versatile Appearance - Available in a variety of colours, finishes and sizes.



Caithness flagstone is used for memorials due to its technical properties, in particular, its superior durability and strength.

Technical Data

Summary of Typical Values

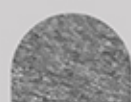
Density	2650 (kg/m ³)	BSEN 1936: 2006
Flexural Strength	35 Mpa	BSEN 12372:2006
Compressive Strength	209 Mpa	BSEN 1926: 2006
Water Absorption	0.20%	BSEN 13755:2008



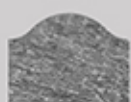
It is also versatile, allowing Norse Stone to offer a range of finishes and options including shaping and sandblasted designs.

Top Shape

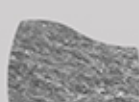
Summary of Shape Options



Rounded



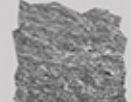
Ogee



Wave



Natural Top



All Natural Edges

Norse Stone produces four main types of memorials each with their own recommended installation methods; plaques, headstones and bases, benches and standing stones.

Memorial Products

Summary of Typical Design Elements



Plaque.
Usually Installed onto walls using screws or hidden dowels fixings.



Headstone & base.
Installed onto concrete foundation and secured using steel anchors.



Bench.
Installed onto concrete foundation and secured using steel dowels.



Standing stone.
Installed directly into the ground and secured using concrete base.

The information contained herein is to the best of our knowledge true and accurate and is given in good faith but without warranty. As part of our continual improvement process, Norse Stone Ltd reserve the right to change the properties listed on this data sheet without any prior notice.



Whilst every effort has been made to ensure that your Caithness flagstone memorial is of the highest quality, a few simple procedures are recommended.

Usage

Caithness flagstone memorials are intended for external use at sites where permissions have been granted to install them.

Routine Maintenance

Annual visual inspections should be performed to check overall condition.

Due to being made from a durable natural stone, our memorials don't usually require any cleaning. In the event cleaning is required, use warm water with a mild detergent or dish soap along with a soft bristled brush.

Never use harsh chemicals or high-pressure sprayers or hoses.

