



A modern focal point or a traditional heat source, furnish your fireplace with a **Caithness flagstone hearth**.

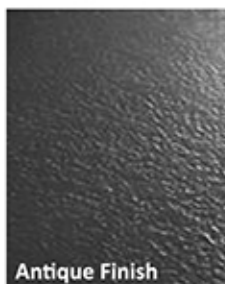
It's striking colours create an attractive feature whilst its natural strength and durability ensures it lasts for years to come. With a wide range of designs, finishes and sizes available using stone extracted from our own quarries, Norse Stone produces the perfect natural stone hearths.



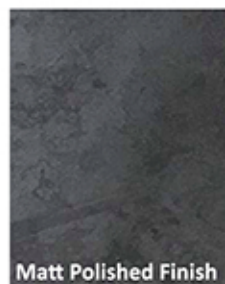
Riven Finish



Brushed Riven Finish



Antique Finish



Matt Polished Finish



High Polished Finish

Features & Benefits

Low Carbon Footprint - From extracting the stone to hand finishing the end product, all processes are handled on site.

High Performance - Renowned worldwide for its natural durability properties.

Wide Range of Uses - High flexural and compressive strength.

Versatile Appearance - Available in a variety of finishes, shapes and sizes.



Caithness flagstone hearths can be adapted to complement its surroundings without compromising its natural strength and durability.

Technical Data

Summary of Typical Values

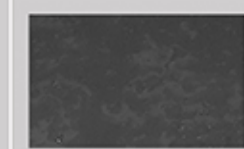
Density	2650 (kg/m ³)	BSEN 1936: 2006
Slip Resistance	96.0 (dry)	BSEN 14231:2003
	69.0 (wet)	BSEN 14231:2003
Flexural Strength	35 Mpa	BSEN 12372:2006
Compressive Strength	209 Mpa	BSEN 1926: 2006
Water Absorption	0.20%	BSEN 13755:2008



Along with our standard shapes and sizes, we also produce orders to our client's specifications. Size, shape and finish can all be chosen to ensure each hearth meets our client's individual requirements.

Product Specification

Typical Hearth Designs



Rectangle



Square



Circle



Corner



T



Teardrop



Quadrant



D

The information contained herein is to the best of our knowledge true and accurate and is given in good faith but without warranty. As part of our continual improvement process, Norse Stone Ltd reserve the right to change the properties listed on this data sheet without any prior notice.



Whilst every effort has been made to ensure that your Caithness flagstone hearth is of the highest quality, it will look better and last longer if a few simple maintenance procedures are adopted.

Usage

Caithness flagstone hearths are intended to be used for internal projects in conjunction with a wide range of different fireplaces and stoves as specified by the designer or installer. Abnormal usage may result in damage to the hearth.

Routine Maintenance

After the hearth has been laid, allow time for the laying material to fully cure.

Hearth surfaces can be washed to remove dust and dirt providing care is taken not to scratch the surface with abrasive cleaning materials. Use hot soapy water and allow the surface to dry.

To seal a hearth, apply 1No. coat of natural stone sealer, repeat as required. Get in touch for recommendations.

